

62
**WHOLESALE
PRICE LIST**

1957

LIBRARY
REF

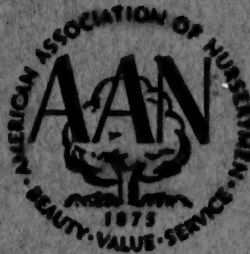


★ FEB 14 1957

U. S. Department of Agriculture

Watkins Nurseries

Since 1876

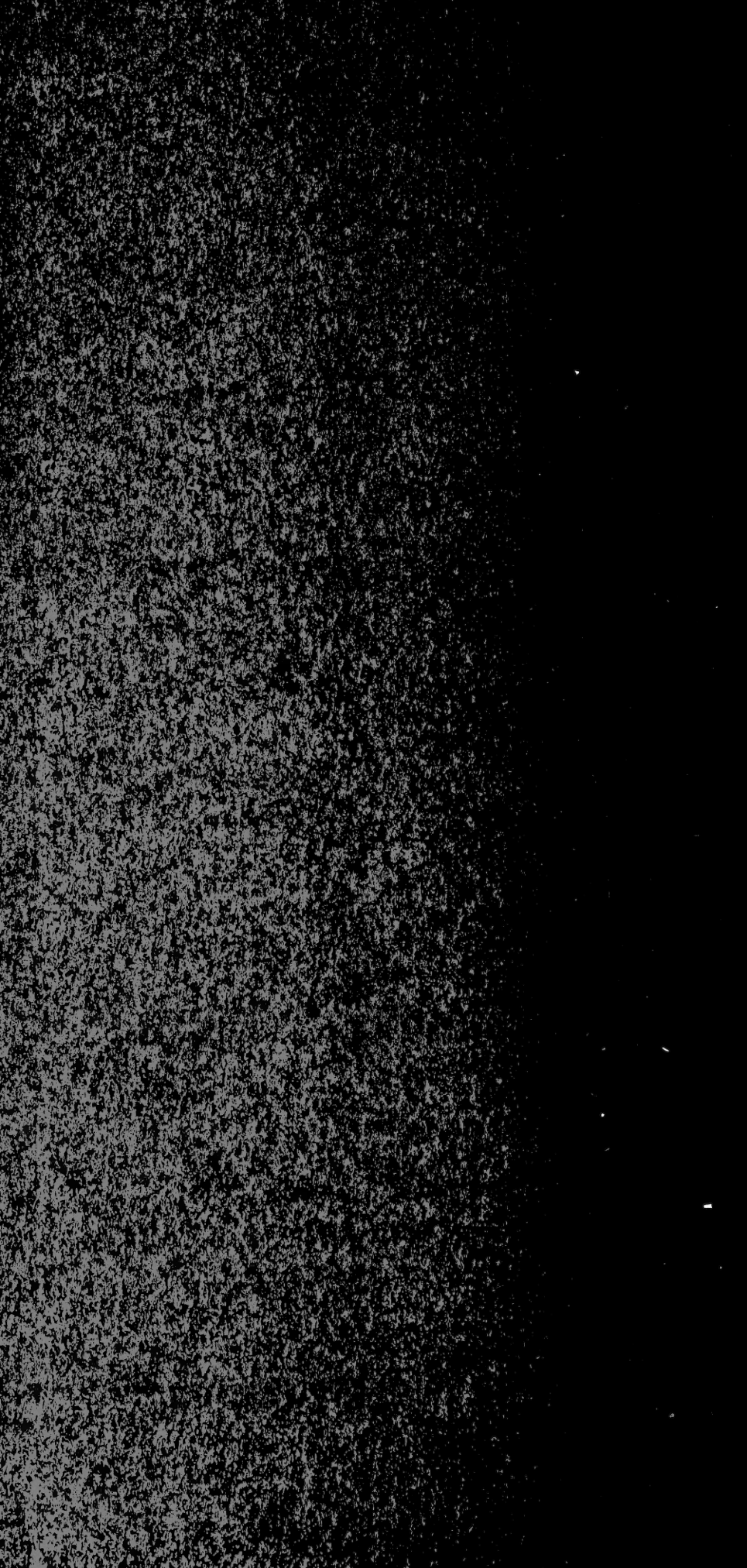


American Association Nurserymen
Southern Nurserymen's Association
Virginia Nurserymen's Association

MIDLOTHIAN, VIRGINIA

Phone
Richmond 2-3306

Phone
Midlothian 2625



TERMS:

Cash, unless you have established credit with us.

LIABILITY:

Orders are taken subject to stock on hand and unsold, with the understanding that they shall be void should injury befall the stock from flood, drought, fire, frost, hurricane, or should our operations be impaired by labor shortage or any other condition beyond our control.

GUARANTEE:

We guarantee plants true to name as sold. When a mistake is made as to type or name of plant we will supply a plant of the proper variety or refund the original purchase price of the plant.

We guarantee plants to be in good condition when they leave the Nursery. We do not guarantee plants condition beyond the loading aboard carrier.

We give no guarantee as to the transplanting results and productiveness of plants sold. All claims for shipping errors must be made within 10 days.

PACKING:

A charge to cover the expense of crating or baling of plants for express or freight shipment will be made. This charge will cover the cost of materials used and labor necessary to accomplish the packing. We try to keep this charge to the minimum.

PRICES:

Prices are subject to change without notice.

All prices are F.O.B. WATKINS NURSERIES, Midlothian, Va.

TELEPHONE:

Richmond, Virginia: 2-3306

Midlothian, Virginia: 2625

CORRESPONDENCE:

Address all correspondence to:

Route 2, Midlothian, Va.

CONIFEROUS EVERGREENS

Price Each Per Ten

ARBORVITAE, AMERICAN

| | |
|-------------------|---------|
| 2 to 3 feet..... | \$ 2.25 |
| 3 to 4 feet | 3.25 |

ARBORVITAE, PYRAMIDAL

| | |
|--------------------------------|------|
| 2 to 3 feet | 2.25 |
| 3 to $3\frac{1}{2}$ feet | 3.25 |

ARBORVITAE, GLOBE

| | |
|---------------------|------|
| 12 to 15 inch | 1.35 |
| 15 to 18 inch | 1.75 |
| 18 to 24 inch | 2.25 |

ARBORVITAE, HOVEY

| | |
|---------------------|------|
| 15 to 18 inch | 1.50 |
| 18 to 24 inch | 2.00 |

ENGLISH JUNIPER

| | |
|-------------------|------|
| 3 to 4 feet | 2.50 |
|-------------------|------|

SQUARROSA VEITCHII

| | |
|---------------------|------|
| 24 to 30 inch | 2.00 |
| 30 to 36 inch | 2.50 |

SPRUCE, NORWAY

| | |
|---------------------|------|
| 18 to 24 inch | 2.00 |
| 2 to 3 feet | 2.75 |

TAXUS, CUSPIDATA

| | |
|---------------------|------|
| 24 to 30 inch | 3.25 |
| 30 to 36 inch | 4.50 |
| 36 to 42 inch | 6.25 |

TAXUS, ERECTA

| | |
|---------------------|------|
| 24 to 30 inch | 4.00 |
| 30 to 36 inch | 6.00 |
| 36 to 42 inch | 8.00 |

TAXUS, HICKSI

| | |
|---------------------|------|
| 24 to 30 inch | 3.25 |
| 30 to 36 inch | 4.50 |
| 36 to 42 inch | 5.75 |
| 42 to 48 inch | 7.00 |

AZALEAS

Price Each Per Ten

AZALEA, CHRISTMAS CHEER

| | |
|---------------------|---------|
| 8 to 10 inch | \$ 1.10 |
| 10 to 12 inch | 1.40 |
| 12 to 15 inch | 1.75 |

AZALEA, FLAME

| | |
|---------------------|------|
| 12 to 15 inch | 1.50 |
| 15 to 18 inch | 2.00 |
| 18 to 24 inch | 3.00 |

AZALEA, FORMOSA

| | |
|---------------------|------|
| 12 to 15 inch | 1.75 |
| 15 to 18 inch | 2.25 |

AZALEA, HINODEGIRI

| | |
|---------------------|------|
| 8 to 10 inch | 1.10 |
| 10 to 12 inch | 1.40 |
| 12 to 15 inch | 1.75 |
| 15 to 18 inch | 2.25 |

AZALEA, INDICA ROSEA

| | |
|---------------------|------|
| 15 to 18 inch | 2.00 |
| 18 to 24 inch | 2.50 |

AZALEA, LILACINA

| | |
|---------------------|------|
| 18 to 24 inch | 2.50 |
| 24 to 30 inch | 3.25 |

BROAD LEAF EVERGREENS

Price Each Per Ten

ABELIA, GRANDIFLORA

| | |
|---------------------|---------|
| 18 to 24 inch | \$ 1.35 |
| 24 to 30 inch | 1.60 |
| 30 to 36 inch | 2.00 |
| 3 - 4 feet | 2.50 |

BARBERRY, JULIANAE

| | |
|---------------------|------|
| 18 to 24 inch | 2.25 |
| 24 to 30 inch | 3.00 |
| 30 to 36 inch | 4.25 |

BARBERRY, TRICANTHOPHORA

| | |
|---------------------|------|
| 24 to 30 inch | 3.00 |
|---------------------|------|

BOXWOOD, SUFFRUTICOSA

| | |
|--------------------------|-------|
| 4 to 6 inch .. per 100 | 30.00 |
| 6 to 8 inch .. per 100 | 50.00 |
| 8 to 10 inch .. each .. | 1.00 |
| 10 to 12 inch .. each .. | 2.00 |
| 12 to 15 inch .. each .. | 3.75 |

ELEAGNUS, PUNGENS

| | |
|---------------------|------|
| 18 to 24 inch | 1.50 |
| 24 to 30 inch | 1.90 |
| 30 to 36 inch | 2.50 |
| 3 to 4 feet | 3.50 |
| 4 to 5 feet | 4.50 |
| 5 to 6 feet | 6.50 |

GARDINIA, FLORIDA

| | |
|------------------|------|
| 1 gal. can | 1.00 |
|------------------|------|

ILEX CORNUTA

| | |
|---------------------|------|
| 24 to 30 inch | 4.75 |
| 30 to 36 inch | 6.50 |
| 36 to 42 inch | 9.00 |

ILEX, CONVEXA

| | |
|---------------------|------|
| 15 to 18 inch | 2.25 |
| 18 to 24 inch | 3.25 |

Price Each Per Ten

ILEX, ROTUNDIFOLIA

| | |
|---------------------|---------|
| 12 to 15 inch | \$ 1.75 |
| 15 to 18 inch | 2.25 |
| 18 to 24 inch | 2.75 |
| 24 to 30 inch | 4.75 |

ILEX, OPACA

| | |
|-------------------|-------|
| 2 to 3 feet | 3.25 |
| 3 to 4 feet | 4.50 |
| 4 to 5 feet | 7.00 |
| 5 to 6 feet | 9.00 |
| 6 to 7 feet | 12.50 |

LIGUSTRUM LUCIDUM

| | |
|---------------------|------|
| 18 to 24 inch | 1.75 |
| 24 to 30 inch | 2.25 |

LIGUSTRUM LUCIDUM RECURVIFOLIA

| | |
|---------------------|------|
| 18 to 24 inch | 1.75 |
| 24 to 30 inch | 2.25 |

LIGUSTRUM JAPONICA

| | |
|-------------------|------|
| 3 to 4 feet | 2.50 |
| 4 to 5 feet | 3.50 |
| 5 to 6 feet | 5.00 |

NANDINA DOMESTICA

| | |
|---------------------|------|
| 18 to 24 inch | 1.65 |
| 24 to 30 inch | 2.00 |

PYRACANTHA, RED

| | |
|---------------------------|------|
| 18 to 24 inch--3 gal. can | 2.00 |
| 24 to 30 inch--3 gal. can | 3.00 |

SHADE AND FLOWERING TREES

Price Each Per Ten

CHERRY, KWANZAN

4 to 6 feet...B & B \$ 3.75

CERCIS, CHINENSIS

2 to 3 feet...B.R.50

3 to 4 feet...B.R.75

4 to 5 feet...B.R. 1.50

MALUS HOPA

4 to 6 feet...B & B 3.50

MALUS ATROPURPUREA

4 to 6 feet...B & B 3.50

MAPLE, SILVER

6 to 8 feet... B.R. 1.50

8 to 10 feet... B.R. 2.25

1½ to 2 inch... B.R. 3.75

2 to 2½ inch... B & B 15.00

PIN OAK

8 to 10 inch... B & B 7.50

1½ to 2 inch... B & B 10.50

2 to 2½ inch.. B & B 15.00

2½ to 3 inch... B & B 22.50

3 to 3½ inch.. B & B 27.50

ULMUS, AMERICAN

8 to 10 feet... B & B 7.00

1½ to 2 inch... B & B 12.00

2 to 2½ inch.. B & B 15.00

2½ to 3 inch... B & B 22.50

Price Each Per Ten

ULMUS, CHINESE

| | | | | | |
|-----------------|----|------------------------|-------|-----|---------|
| 8 | to | 10 feet... | B & B | ... | \$ 7.00 |
| 1 $\frac{1}{2}$ | to | 2 inch... | B & B | ... | 12.00 |
| 2 | to | 2 $\frac{1}{2}$ inch.. | B & B | ... | 15.00 |
| 2 $\frac{1}{2}$ | to | 3 inch... | B & B | ... | 22.50 |

WILLOW, WEEPING

| | | | | | | |
|---|----|--------|------|-------|-----|------|
| 4 | to | 5 feet | | B & B | ... | 1.25 |
| 5 | to | 6 feet | | B & B | ... | 1.75 |
| 6 | to | 8 feet | | B & B | ... | 2.25 |

WILLOW, DISCOLOR

| | | | | | | |
|---|----|--------|------|-------|-----|------|
| 4 | to | 5 feet | | B & B | ... | 1.50 |
|---|----|--------|------|-------|-----|------|

FLOWERING SHRUBS

Price Each Per Ten

BARBERRY, ATROPURPUREA

| | | |
|------------------|-----------|--------|
| 18 to 24 inch .. | B.R. | \$.65 |
| 2 to 3 feet | B & B ... | 1.00 |

CALICARPA, AMERICANA

| | | |
|------------------|----------|------|
| 2 to 3 feet | B.R..... | .50 |
| 3 to 4 feet | B.R..... | .75 |
| 4 to 5 feet | B.R..... | 1.25 |

CREPE MYRTLE, PINK

| | | |
|------------------|-----------|------|
| 2 to 3 feet | B & B ... | 1.50 |
| 3 to 4 feet | B & B ... | 2.25 |
| 4 to 5 feet | B & B ... | 3.50 |

CREPE MYRTLE, RED

| | | |
|------------------|-----------|------|
| 2 to 3 feet | B & B ... | 1.50 |
| 3 to 4 feet | B & B ... | 2.25 |
| 4 to 5 feet | B & B ... | 3.50 |

CREPE MYRTLE, WHITE

| | | |
|------------------|-----------|------|
| 2 to 3 feet | B & B ... | 2.00 |
| 3 to 4 feet | B & B ... | 2.75 |

CYDONIA JAPONICA, RED

| | | |
|------------------|-----------|------|
| 2 to 3 feet | B & B ... | 1.50 |
|------------------|-----------|------|

DEUTZIA GRACILIS

| | | |
|------------------|----------|-----|
| 15 to 18 inch... | B.R. ... | .50 |
| 18 to 24 inch... | B.R. ... | .75 |

FLOWERING SHRUBS (continued)

Price Each Per Ten

FORSYTHIA, SPECTABILIS

| | |
|---------------------------|--------|
| 2 to 3 feet ... B.R. | \$.50 |
| 3 to 4 feet ... B.R. | .60 |
| 4 to 5 feet ... B.R. | .75 |

HYDRANGEA OTAKSA

| | |
|------------------------|------|
| 2 year B & B ... | 1.25 |
|------------------------|------|

HYDRANGEA P. G.

| | |
|---------------------------|------|
| 2 to 3 feet ... B.R. | .50 |
| 3 to 4 feet ... B.R. | .75 |
| 4 to 5 feet ... B.R. | 1.25 |

LIGUSTRUM, CALIFORNIA

| | |
|---------------------------|------|
| 3 to 4 feet ... B & B ... | 1.00 |
| 4 to 5 feet ... B & B ... | 1.50 |
| 5 to 6 feet ... B & B ... | 2.00 |

LIGUSTRUM, AMOOR RIVER

| | |
|---------------------------|-----|
| 2 to 3 feet ... B.R. | .25 |
| 3 to 4 feet ... B.R. | .35 |

PHILADELPHUS, VIRGINAL

| | |
|---------------------------|------|
| 3 to 4 feet ... B & B ... | 1.00 |
|---------------------------|------|

POMEGRANATE

| | |
|---------------------------|------|
| 2 to 3 feet ... B & B ... | 1.50 |
| 3 to 4 feet ... B & B ... | 2.25 |

FLOWERING SHRUBS (continued)

Price Each Per Ten

SPIREA BILLARDI ALBA

| | |
|---------------------------|--------|
| 2 to 3 feet ... B.R. | \$.50 |
| 3 to 4 feet ... B.R. | .75 |

SPIREA ANTHONY WATERER

| | |
|---------------------------|-----|
| 18 to 24 inch .. B.R. ... | .60 |
| 2 to 3 feet B.R. ... | .85 |

SPIREA REEVESIANA

| | |
|---------------------------|------|
| 3 to 4 feet B.R. ... | .75 |
| 4 to 5 feet B.R. ... | 1.00 |
| 5 to 6 feet B.R. ... | 1.25 |

SPIREA THUNBERGII

| | |
|---------------------------|------|
| 3 to 4 feet B.R. ... | .90 |
| 4 to 5 feet B.R. ... | 1.10 |

SPIREA VAN HOUTTEI

| | |
|---------------------------|------|
| 2 to 3 feet B.R. ... | .50 |
| 3 to 4 feet B.R. ... | .75 |
| 4 to 5 feet B.R. ... | 1.00 |

SYRINGA VULGARIS

| | |
|---------------------------|------|
| 2 to 3 feet B & B .. | 1.25 |
|---------------------------|------|

VIBURNUM DILITATUM

| | |
|---------------------------|------|
| 2 to 3 feet B & B .. | 1.25 |
| 3 to 4 feet B & B .. | 1.75 |

FLOWERING SHRUBS (continued)

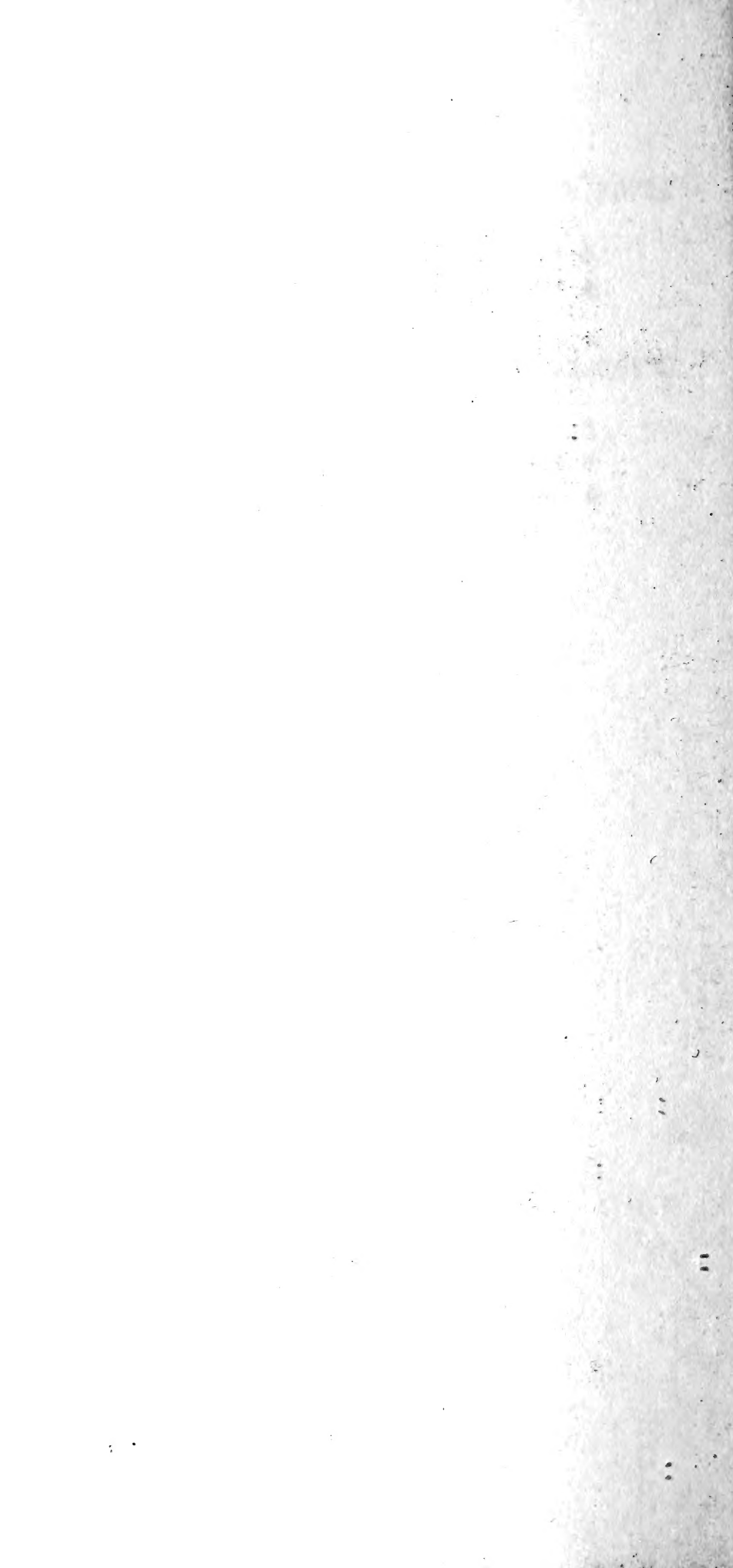
Price Each Per Ten

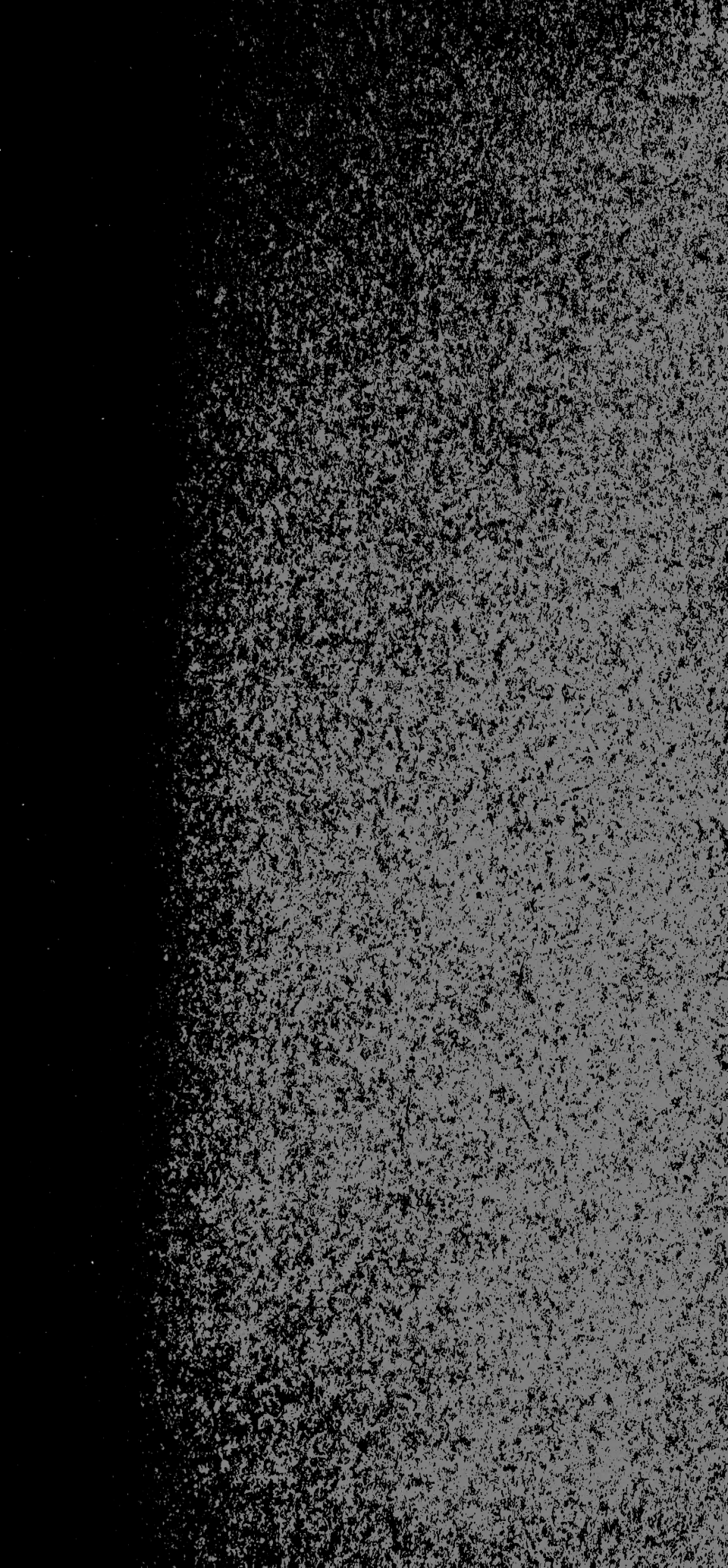
VITEX MACROPHYLLA

| | |
|---------------------------|--------|
| 3 to 4 feet ... B.R. | \$.75 |
| 4 to 5 feet ... B.R. | 1.00 |

WEIGELIA ROSEA

| | |
|---------------------------|------|
| 2 to 3 feet ... B.R. | .50 |
| 3 to 4 feet ... B.R. | .75 |
| 4 to 5 feet ... B.R. | 1.00 |





— FROM —

Watkins Nurseries

MIDLOTHIAN, VA.